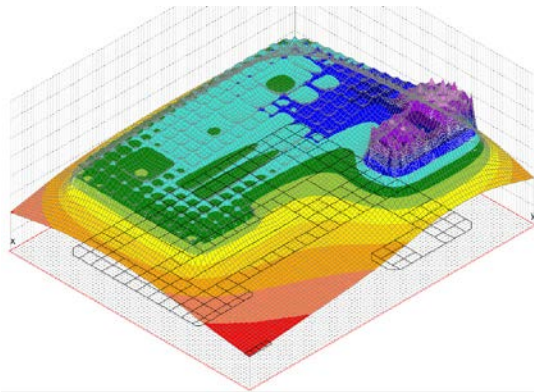


# Masterthesis

## Comparison calculation and measurement of earthing systems

### Background and motivation

The grounding systems of a system is typically designed with regard to the maximum touch voltages. By means of some examples, the calculation results of three different existing calculation programs will be compared and compared with the results of measurements.



### Research question (s)

How far do the different calculation results agree?

How can one explain any deviations?

Is it possible to calculate the phase angle of the ground impedance by calculation?

### Procedure / methodology / Mission

- Definition of various configurations that are calculated / measured
- incorporation and application of the calculation programs
- Review with simple formulas from standards
- Performing / accompanying a measurement
- Analysis comparison measurement / calculation

### organizational

Start immediately.

### Contact / Supervisor

Dr. Katrin Friedl (katrin.friedl@tugraz.at)