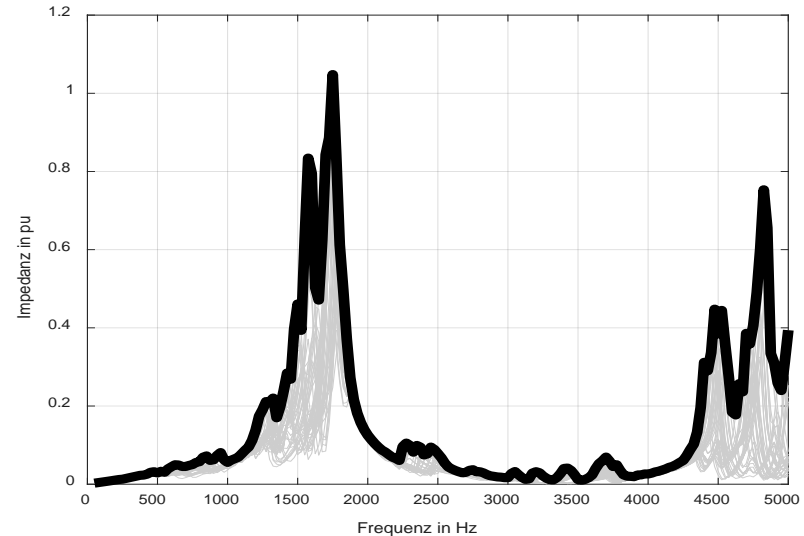


Calculation of harmonic grid impedance

For a full converter connected pump storage power plant, the harmonic grid impedance was calculated, taking different switching configurations into account. A critical resonance peak was detected around 1750 Hz, caused by stub line connecting the plant.



Harmonic grid impedance
for different switching
configurations and envelope

Contact: herwig.renner@tugraz.at