

# **Interpretation and Localisation of SDG 11**

## **Actors, actions and ambitions**

SBE 19 Graz  
11. September 2019

Dipl.-Ing. Hilmar v. Lojewski  
Councillor of the German Association of Cities  
and the North-Rhine Westphalian Association of Cities

Department Urban Development, Housing, Building and Mobility

# Association of German Cities

## The Association of German Cities

- **Independent voice** of german cities
- **Community of solidarity** of cities
- **Represents** the idea of local self-government to Federal Government, Federal States (Bundesländer), European Union, governmental and non-governmental organisations
- **Negotiates** laws, policies, programs, subsidies etc. at national and state level
- **Interconnects** the mayors, councillors and heads of departments and **transfers** innovations and good/bad lessons learnt
- **Initiates** activities and sometimes even innovations
- Organized like a city with a CEO and 6 departments (approx. 100 employees)



Association of German Cities –  
the Voice of Germany's Cities

AACHEN | AALEN | ALTENBURG | AMBERG | ANNABERG-BUCHHOLZ | ANSBACH  
ASCHAFFENBURG | AUERBACH-WOODLAND | AUGSBURG | BAD KREUZNACH  
BAD REICHERHALL | BADEN-BADEN | BAMBERG | BAUTZEN | BAYREUTH  
BERLIN | BIBERACH AN DER RISS | BIELEFELD | BOCHOLT | BOCHUM  
BONN | BOTTRUP | BRANDENBURG AN DER HAVEL | BRUNNSCHWIG  
BREMEN | BREMERHAVEN | CASTROP-RAUDEL | CELLE | CHEMNITZ | COBURG  
COTTBUS | DARMSTADT | DELITZSCH | DELMENHORST | DEMMIN | DESSAU-  
ROSSLAU | DORTMUND | DRESDEN | DUISBURG | DÜREN | DOSSELDORF  
EISENACH | EISENHÜTTENSTADT | EMDEN | ESSEN | ERBEN | ERFURT  
ERSEN | ESSLINGEN AM NECKAR | FALKENSEE | FILDERTSTADT | FINSTERWALDE  
FLENSBURG | FORST (LAUSITZ) | FRANKENTHAL (PFALZ) | FRANKFURT (ODER)  
FRANKFURT AM MAIN | FREIBERG | FREIBURG IM BREISGAU | FRIEDRICHSHAFEN  
FULDA | FÜRTH | GELSENKIRCHEN | GERA | GIESEN | GLADBECK | GLAUCHAU  
GOSLAR | GOTHA | GÖTTINGEN | GRÄFELFING | GREIFSWALD | HAGEN | HALLE  
(SAALE) | HAMBURG | HAMELN | HAMBURG | HANAU | HANNOVER | HEIDELBERG  
HEIDENHEIM AN DER BRENZ | HELLSBRONN | HENNINGSDORF | HERFORD | HERNE  
HILDESHEIM | HOF | HOHEN NEUENDORF | HOYERSWERDA | INGOLSTADT  
ISERLOHN | JENA | KAISERSLAUTERN | KAMENZ | KARLSRUHE | KASSEL  
KAUFBEUREN | KEMPTEN (ALLGÄU) | KIEL | KOBLENZ | KÖLN | KONSTANZ | KREFELD  
LANDAU IN DER PFALZ | LANDSBERG AM LECH | LANDSHUT | LAUCHHAMMER  
LEINFELDE-WORBIS | LEIPZIG | LEVERKUSEN | LIMBACH-OSERFROHNA | LINDAU  
(BODENSEE) | LOHRACH | LÜBECK | LUDWIGSBURG | LUDWIGSHAFEN | LÜNEBURG  
MAGDEBURG | MAINZ | MANNHEIM | MARBURG | MARKTREDWITZ | MEMMINGEN  
MERSEBURG (SAALE) | MÖNCHENGLADBACH | MOHLHAUSEN | MÜLHEIM AN DER  
RUHR | MÜNCHEN | MÜNSTER | NEULUM | NEUPRÄNZENBURG | NEUENHAGEN  
NEUMÜNSTER | NEURUPPIN | NEUSS | NEUSTADT AM ROSENBERG | NEUSTADT  
AN DER WEINSTRASSE | NEUSTADT BEI COBURG | NEULWED | NORDHAUSEN  
NÖRNBERG | OBERHAUSEN | OFFENBACH AM MAIN | OFFENBURG | OLDENBURG  
OSNABRÜCK | PASSAU | PFORZHEIM | PRAMSENS | PIRNA | PLAUEN | POTSDAM  
QUEDLINBURG | RECKLINGHAUSEN | REGENSBURG | REMSCHED | REUTLINGEN  
REINZ-DAMBARTEN | REGA | ROSENHEIM | ROSTOCK | SCHARBROCKEN  
SALZGITTER | SASSNITZ | SCHWABACH | SCHWÄBISCH GEMÜND | SCHWEDT/ODER  
SCHWEINFURT | SCHWERN | SIEGEN | SINDELFINGEN | SOLINGEN | SPEYER  
STENDAL | STRALSUND | STUTTGART | SUHL | TALCHA | TELTOW | TETEROW  
TRANSTEN | TRIER | TROSSEN | ULM | VELDEN | WERSEN | WILKINGEN-  
SCHWENNINGEN | VÖLKLINGEN | WEIDEN IN DER OBERPFALZ | WEIMAR | WIESBADEN  
WILHELMSHAVEN | WISMAR | WITTEN | WITTENBERG | WOLFENBÜTTEL | WOLFSBURG  
WOLGAST | WORMS | WUPPERTAL | WÜRZBURG | ZWEIFÜCKEN | ZWICKAU



# Demands by the organizers

Welche Rolle spielt SDG11 im Gesamtkontext aller Nachhaltigkeitsziele und welche Wechselwirkungen ergeben sich mit den übrigen SDGs?

Welche Teilziele sind für die Situation in Mitteleuropa von Bedeutung und welche Indikatoren lassen sich konkret anwenden? Welche Erfahrungen liegen vor?

Welche europäischen, nationalen und regionalen Initiativen existieren? Gibt es bereits ausformulierte und verallgemeinerungsfähige Grundlagen und Strategien?

Wie können nachhaltige Bauwerke zu einer nachhaltigen Stadtentwicklung beitragen, was bietet die nachhaltige Stadt an Standortqualitäten für Einzelobjekte?

Wie können die bisher entwickelten Methoden, Indikatoren und Nachhaltigkeitsbewertungssysteme für Bauwerke, Quartiere und Städte das Erreichen des SDG11 unterstützen? Welche Weiterentwicklungen sind dahingehend erforderlich/wünschenswert?

# 1

## New Urban Agenda, SDGs and COP21

### 3 world summits and their impacts on local communities



COP21 - CMP.11  
**PARIS 2015**  
UN CLIMATE CHANGE CONFERENCE

- SDGs and COP21 as well as the NUA need to have direct impacts on
  - local investments,
  - modes of energy production and dissemination,
  - modes of transport and construction



# 1

## New Urban Agenda, SDGs and COP21

### 3 world summits and their impacts on local communities

- It is time for a paradigm shift from „anything goes“ to „high time for change“
- Paths towards a „global, action oriented transformation“

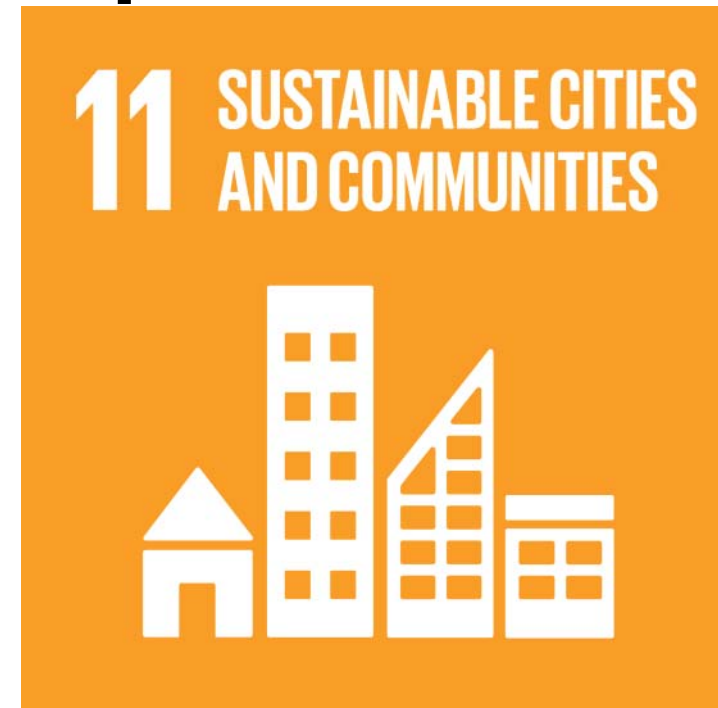


# 1

## On Goal 11 and its interdependencies

### Make cities and human settlements inclusive, safe, resilient and sustainable

- 11.1 Access to housing, basic services and upgrade slums.
- 11.2 Access to transport systems, expanding public transport.
- 11.3 Inclusive and sustainable urbanization.
- 11.4 Strengthen efforts to protect and safeguard the world's cultural and natural heritage.
- 11.5 Reduce number of deaths and people affected caused by disasters,
- 11.6 Reduce adverse per capita environmental impact of cities.

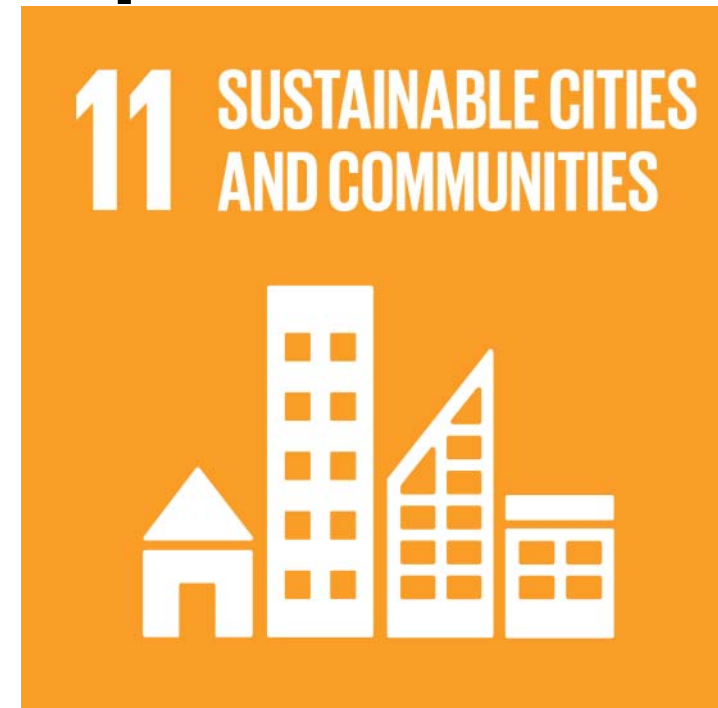


# 1

## On Goal 11 and its interdependencies

### Make cities and human settlements inclusive, safe, resilient and sustainable

- 11.7 Provide access to safe, inclusive and accessible, green and public spaces.
- 11.b Increase number of cities and human settlements adopting and implementing integrated policies.
- 11.c Support least developed countries, including through financial and technical assistance, in building sustainable and resilient buildings utilizing local materials.

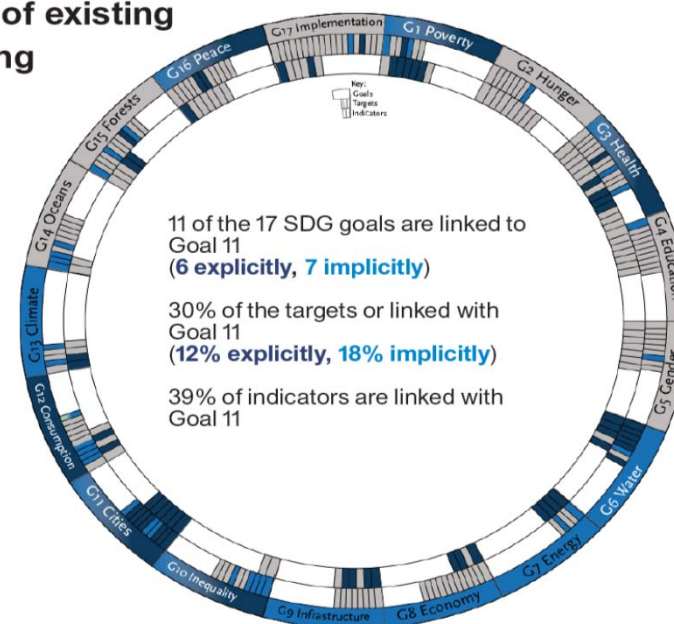


# 1

## On Goal 11 and its interdependencies

- SDGs, COP 21 und New Urban Agenda are implicitly linked
- So are most of the sectoral challenges at the local level which need to be reflected in the approach of integrated urban development

Summary of existing and missing linkages



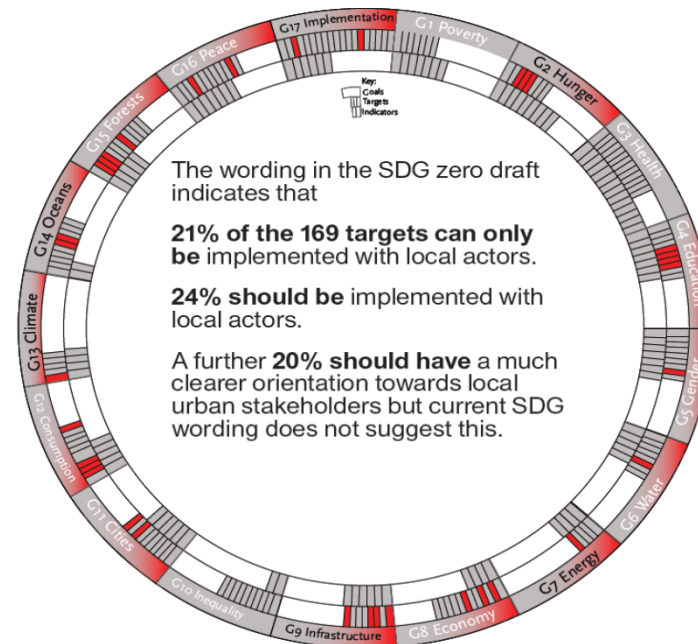


# 1

## On Goal 11 and its interdependencies

- 65 % of the Agenda 2030 goals cannot or hardly been achieved without the local level.
- But the local level hadn't a great say in designing the objectives and its indicators.
- Make mayors govern the world...?

Leverage



# On Goal 11 and its interdependencies

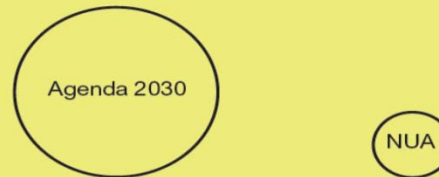
To link the SDGs and climate goals with the New Urban Agenda – the „once in a lifetime chance“

And the same at the local level, please!

Why do we need a New Urban Agenda?

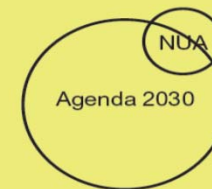
**Scenario A:**

*Proud, but lonely:*  
Habitat III as a delinked process and the NUA as a standalone product



**Scenario B:**

**Filling the gaps:**  
Strengthening the “urban” dimension of the Agenda 2030

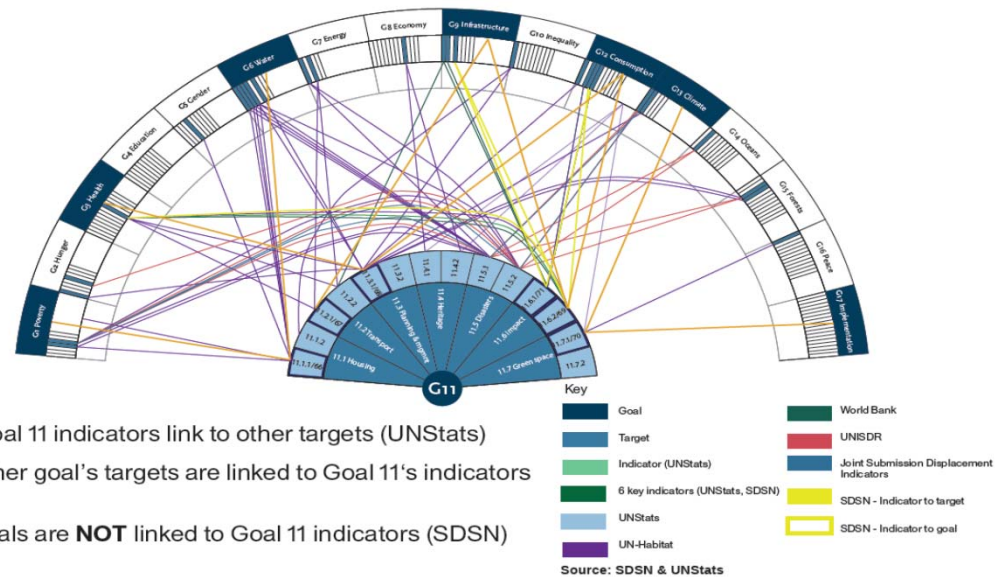


Quelle: Prof. Philip Misselwitz, Habitat Unit, TU Berlin

# 1 On Goal 11 and its interdependencies

Goal 11 indicators to other goals and targets

- The interdependencies of Goal 11 are obvious.
- The NUA reflects the spatial dimension of the Agenda 2030 at the local level.



86% of Goal 11 indicators link to other targets (UNStats)

30% of other goal's targets are linked to Goal 11's indicators (SDSN)

9 other goals are **NOT** linked to Goal 11 indicators (SDSN)

# 2

## On localising the Sustainable Development Goals



Quelle: <https://unhabitat.org/un-habitat-for-the-sustainable-development-goals/>

## 2

# On localising the Sustainable Development Goals

## The German approach – “SDG Indicators for Municipalities”

- Aim of the initiative “SDG Indicators for Communities” - develop appropriate indicators for the depiction of SDGs at municipal level in German i.e. compile and, where necessary, redefine them, and provide access to the indicator parameters.
- Indicator development consists of defining and describing indicators for the relevant goals and sub-goals, as well as surveying and analyzing indicator parameters.

A joint initiative by the Association of German Cities (DST), German County Association (DLT), German Association of Towns and Municipalities (DStGB), Federal Institute for Research on Building, Urban Affairs and Spatial Development (BBSR), German Institute of Urban Studies (Difu), Service Agency Communities in One World (SKEW) of Engagement Global and the Bertelsmann Stiftung (BSt).

## 2

# Localizing the SDGs Starting Point & Objectives

### Sustainable Development Goals (SDGs)

**United Nations:** Decision on the 2030 agenda with SDGs in September 2015.

**Federal Government:** Update of national sustainability strategy with a systematic orientation towards the SDGs in January 2017.

**States:** Sustainability strategies, partly with orientation towards the SDGs.

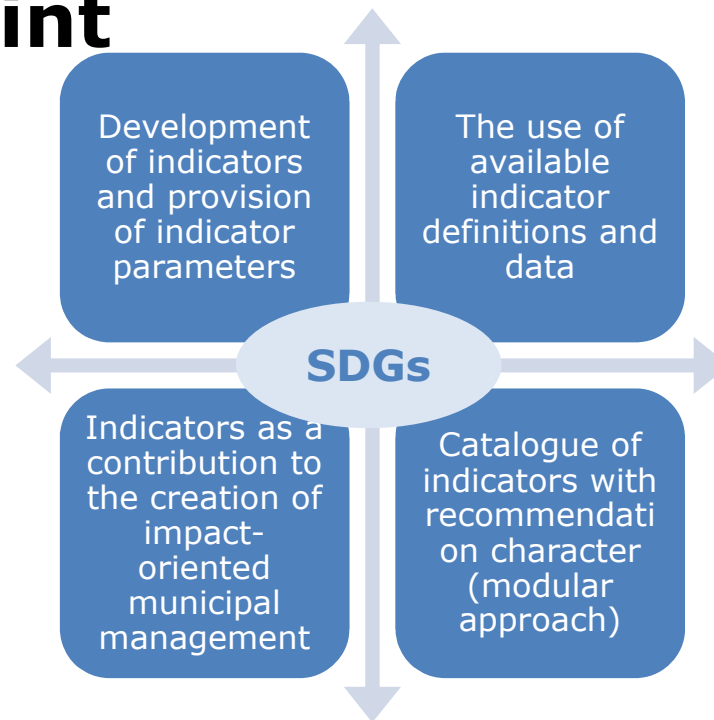
**Municipalities:** Growing number of sustainability strategies with orientation towards the SDGs.

### Indicators

- UN proposals for indicators that depict the SDGs at international level (also the basis for SDG monitoring on national, regional and local level).
- The following must be taken into account:
  - Not all SDGs (main objective and underlying objectives etc.) do carry the same relevance in all states and at all levels.
  - Not all indicators are readily and/or fully available everywhere.

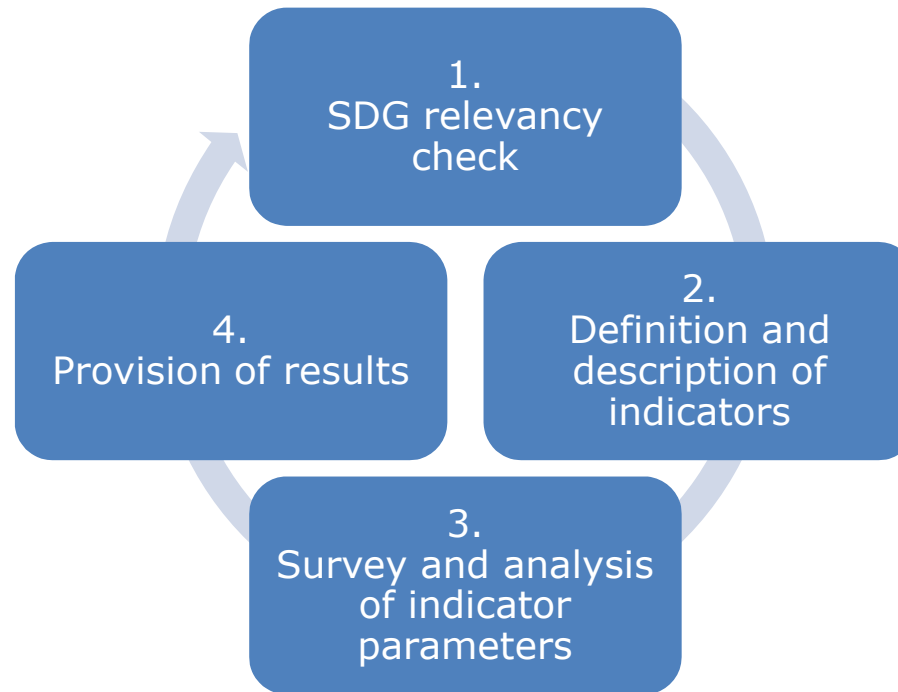
---

## 2 Localizing the SDGs Starting Point



---

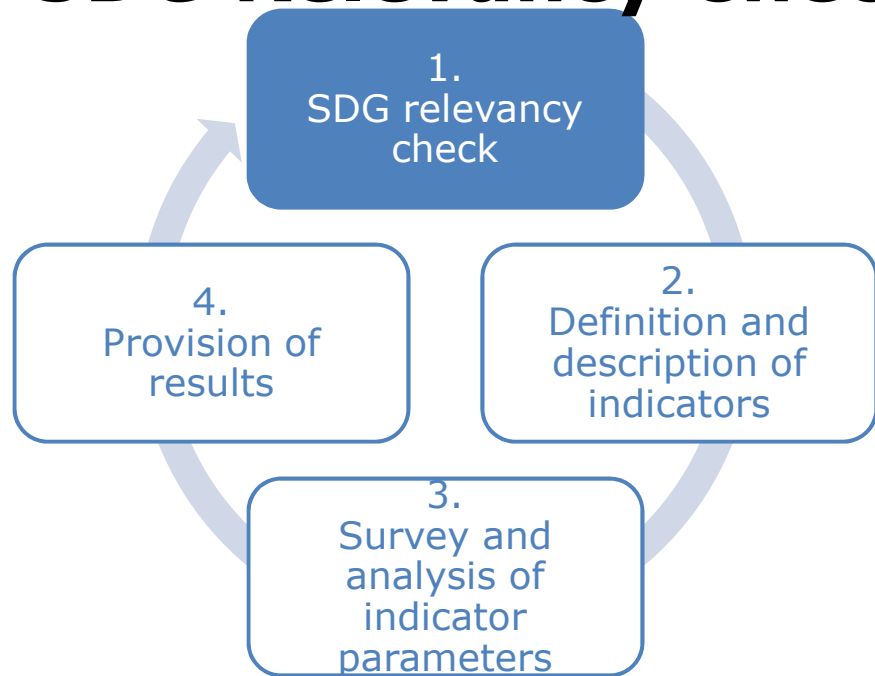
## 2 Localizing the SDGs Method





## 2

# Localizing the SDGs SDG Relevancy Check

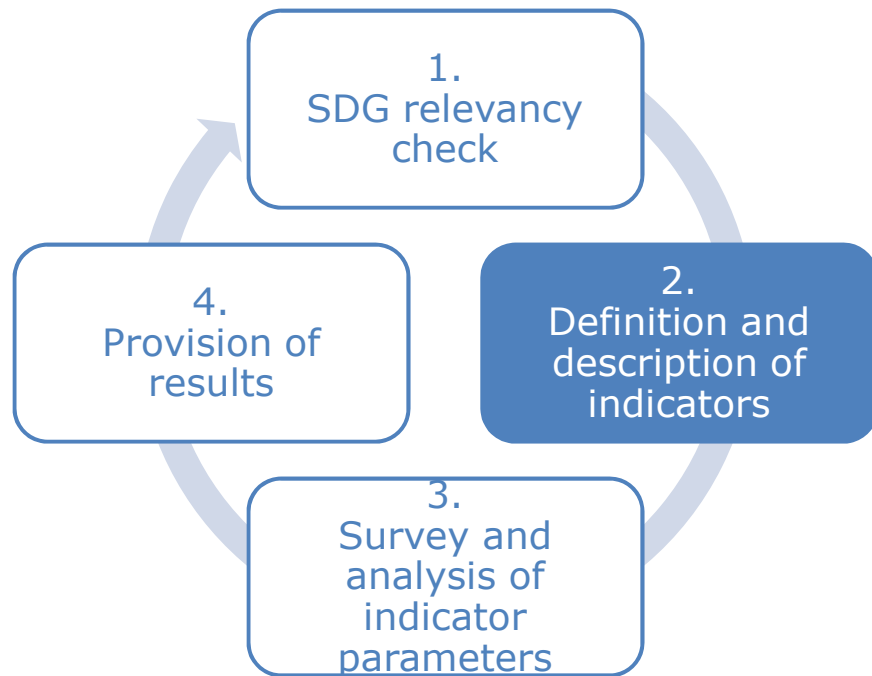


- **Objective:**  
Clarify whether individual SDGs (goals and sub-goals) can be described as having relevance for German municipalities.
- **Approach:**
  - Division of sub-goals into individual objectives.
  - Check the extent to which the objective addresses a problem of German municipalities (problem check).
  - Check the extent to which municipal tasks can contribute towards the overall objective (task check).

## 2

# Localizing the SDGs

## Definition and description of the indicators

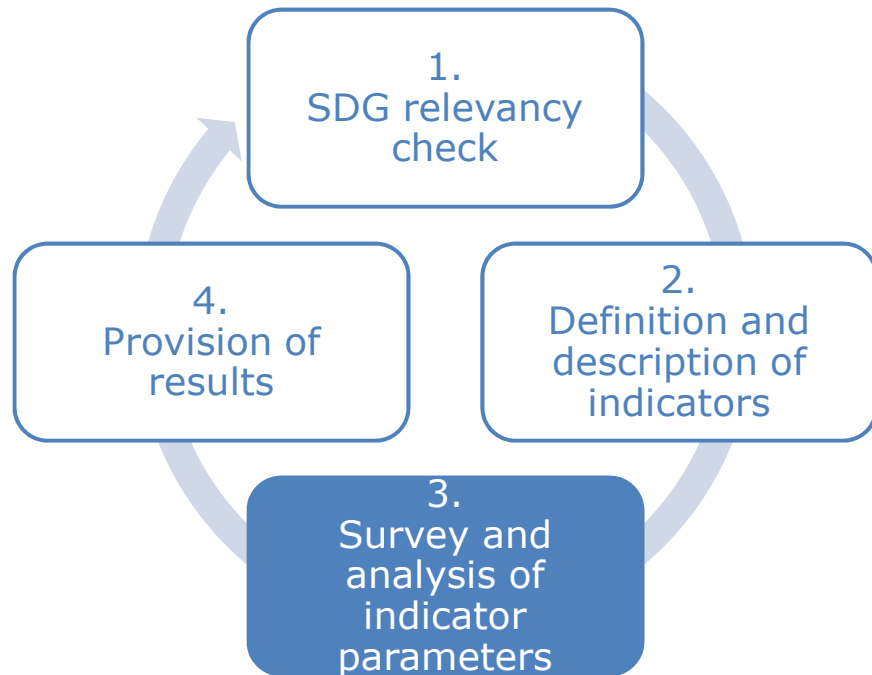


- **Objective:**  
Profile descriptions of suitable SDG indicators.
- **Approach:**
  - Collection of indicators (based upon fixed sources).
  - Evaluation of indicators (based upon fixed criteria).
  - Selection of indicators (based upon fixed minimum standards).
  - Description of indicators (in a profile format).

## 2

# Localizing the SDGs

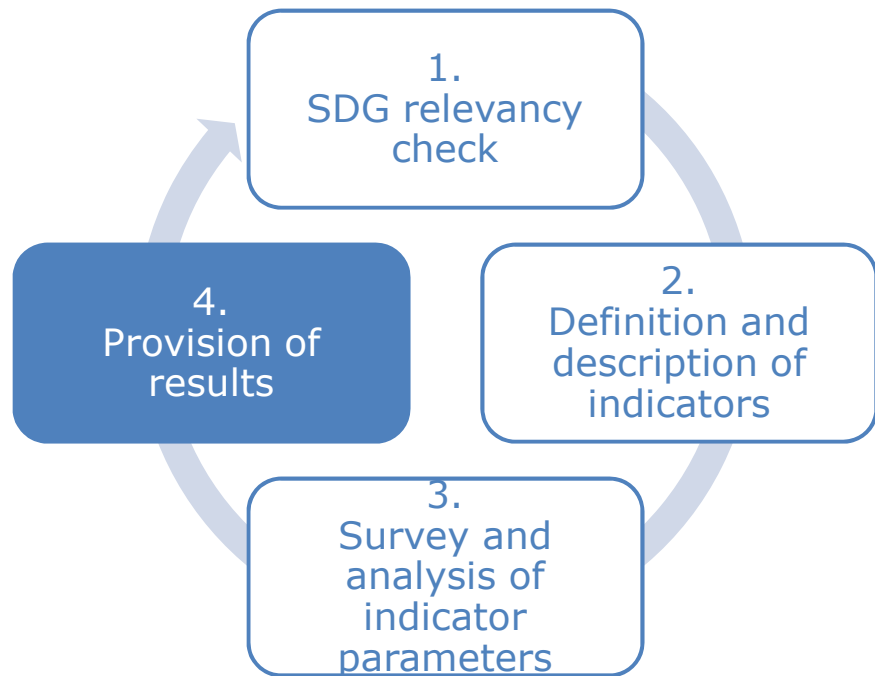
## Survey and analysis of the indicator parameters



- **Objective:**  
Accumulation of indicator parameters for all cities and municipalities over 5,000 inhabitants as well as all rural districts in Germany, and check of indicator catalogue.
- **Approach:**
  - Survey of indicator parameters (taken from official statistics as a rule).
  - Analysis of the data (using univariate and multivariate methods).

## 2

# Localizing the SDGs Provision of the results



- **Objective:**  
Provision of the indicator development and the indicator parameters for all cities and municipalities with more than 5,000 inhabitants as well as all rural districts.
- **Approach:**
  - Creation of a joint publication of the results of the development of the indicators.
  - Publication of the indicator value results onto the following platforms:  
[www.wegweiser-kommune.de](http://www.wegweiser-kommune.de) (Bertelsmann Stiftung) and possibly [www.inkar.de](http://www.inkar.de) (BBSR).

# 2

## Localizing the SDGs SDG-Indicators for cities

47 key indicators jointly with

- Federal Institute for Research on Building, Urban Affairs and Spatial Development BBSR
- Bertelsmann foundation
- Difu
- All the communal associations
- With full reference to SDGs
- Full reference to RFSC Europe
- Expandable if need be by cities

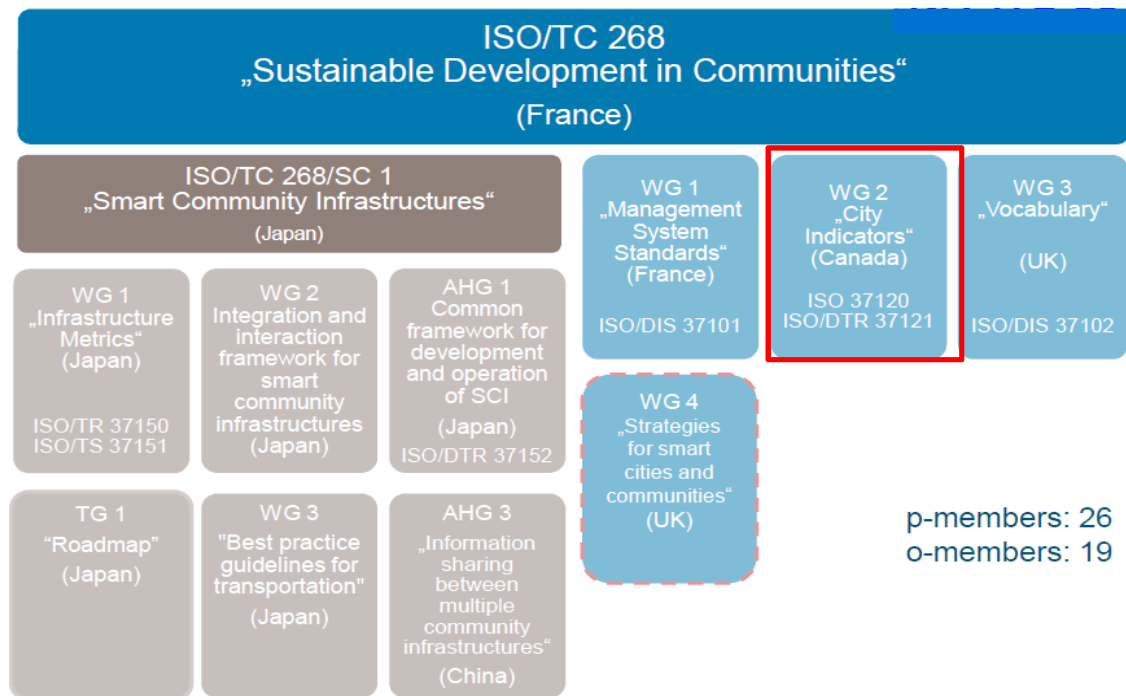


# 2

## Localizing the SDGs

### No indicators by institutions without mandate!

- Who asked the Canadian Institute to define indicators?
- Who profits from this, who becomes dependent on indicators defined by third parties?

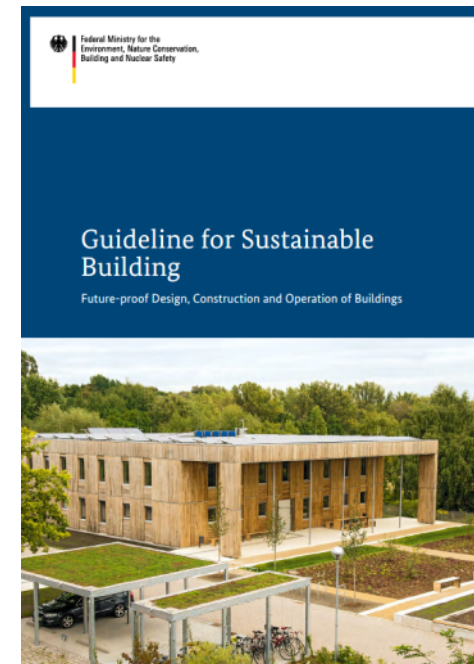


Quelle: ISO TC 268 Übersicht Normungsgremien

# 3

## Sustainable buildings for sustainable urban development

- The 1 % dilemma – new construction
- The 1-3 % dilemma – existing building stock
- How to accelerate the improvement of the CO<sub>2</sub>-balance?
  - Maintenance and operation
  - Refurbishment and multiple uses
  - Energy prices and CO<sub>2</sub>-taxation

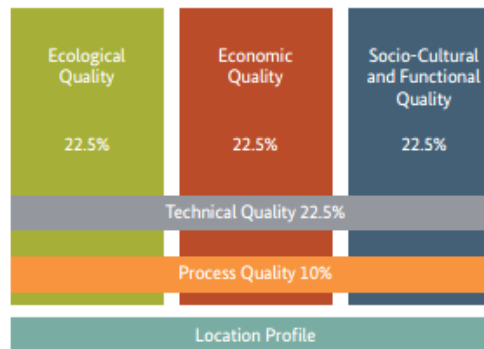


# 3

## Sustainable buildings for sustainable urban development

The BNB-System for public buildings – open questions

- Scaling up for all public buildings?
- Wider spread application in the private sector?



The structure of the Assessment System for Sustainable Building for Federal Buildings (BNB)

### Overview of Criteria

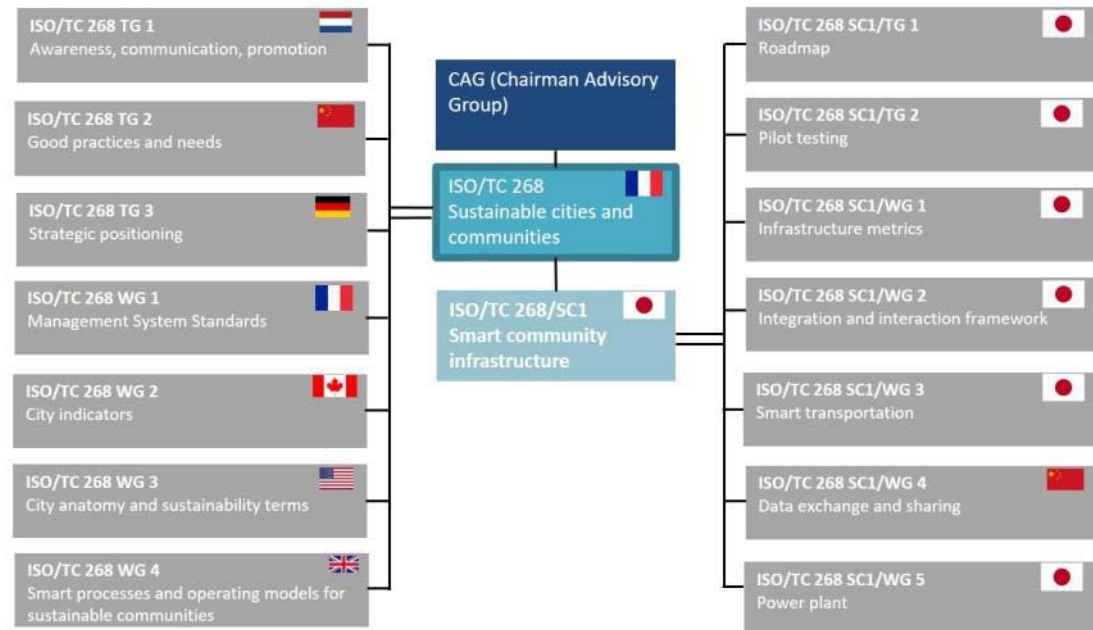
	Relevant life phase	Assessment method	Verification management	Time of documentation	Factor of relevance	Percentage share of overall result
<b>Ecological Quality</b>						
<b>1.1 Effects on Global and Local Environment</b>						
1.1.1	Global Warming Potential	↻ → E	DT	□□□□	3	3.375%
1.1.2	Ozone Depletion Potential	↻ → E	DT	□□□□	1	1.125%
1.1.3	Photochemical Ozone Creation Potential	↻ → E	DT	□□□□	1	1.125%
1.1.4	Acidification Potential	↻ → E	DT	□□□□	1	1.125%
1.1.5	Eutrophication Potential	↻ → E	DT	□□□□	1	1.125%
1.1.6	Risks to the Local Environment	↻ ↙ P	TP	□□□□	3	3.375%
1.1.7	Sustainable Logging / Wood	🏠 ↙ P	TP	□□□□	1	1.125%
<b>1.2 Demand of Resources</b>						
1.2.1	Primary Energy Demand Not Renewable (PE <sub>nr</sub> )	↻ → E	DT	□□□□	3	3.375%
1.2.2	Total Primary Demand (PE <sub>tot</sub> ) and Amount of PE <sub>nr</sub>	↻ → E	DT	□□□□	2	2.250%
1.2.3	Fresh Water Demand and Quantity of Wastewater	🏠 → P	DT	□□□□	2	2.250%
1.2.4	Demand of Space	🏠 ✓ C	PO	□□□□	2	2.250%
<b>2. Economic Quality</b>						
<b>2.1 Life Cycle Costs</b>						
2.1.1	Building-related Life Cycle Costs	↻ → E	DT	□□□□	3	13.50%
<b>2.2 Performance</b>						
2.2.1	Value Stability	🏠 ✓ P	DT	□□□□	2	9.00%
<b>3. Socio-Cultural and Functional Quality</b>						
<b>3.1 Health, Comfort and User Satisfaction</b>						
3.1.1	Thermal Comfort in Winter	🏠 ✓ P	DT	□□□□	2	1.607%
3.1.2	Thermal Comfort in Summer	🏠 ✓ P	DT	□□□□	3	2.411%
3.1.3	Indoor Air Quality	🏠 ↙ E	□□□□	HU	3	2.411%
3.1.4	Acoustic Comfort	🏠 ✓ P	DT	□□□□	1	0.804%
3.1.5	Visual Comfort	🏠 ✓ P	DT	□□□□	3	2.411%
3.1.6	Influence of the User	🏠 ✓ P	DT	□□□□	2	1.607%
3.1.7	Outdoor Qualities	🏠 ✓ P	DT	□□□□	1	0.804%
3.1.8	Safety and Incident Risks	🏠 ↙ P	DT	□□□□	1	0.804%
<b>3.2 Functionality</b>						
3.2.1	Barrier-free Building	🏠 ↙ P	DT	□□□□	2	1.607%
3.2.2	Space Efficiency	↻ → P	DT	□□□□	1	0.804%
3.2.3	Capability of Conversion	🏠 ✓ P	DT	□□□□	2	1.607%
3.2.4	Public Accessibility	🏠 ✓ P	DT	□□□□	2	1.607%
3.2.5	Bicycle Comfort	🏠 ✓ P	DT	□□□□	1	0.804%



# 3 Sustainable buildings for sustainable urban development

- The ISO/TC 268 interest groups – manifold and profit driven!
- Who profits from defining standards?
- How to comply with the SDGs and its indicators??

*Organisational structure of ISO/TC 268*



---

# 4

## Critical Outlook– Mainstream or „Counterstream“?

**4th Conference of „Denkwerk Zukunft“ in 2017**

„Why we don't do what we deem necessary – About the power of traditional thinking“



# 4

## New Urban Agenda, SDGs and COP21

### 3 World Summits and their impact on mankind ...

- UN-conferences – or better watching films?
- Maybe we should rather spread the message via films and actors...



# Epilog

Yellow-Redlight? Or on the way to green?



[www.staedtetag.de](http://www.staedtetag.de)

***Love your city***

***Ama a tu ciudad - Aime ta ville***

***Şehrini sev - любите свой город***

***अपने शहर से प्यार करो - أحب مدينتك - شهرت را دوست دارم***