

Christian Doppler Laboratory for Model Based Control of Complex Test Bed Systems

Focus: Applied basic research in cooperation with

- Kristl, Seibt & Co GmbH
- Lam Research AG

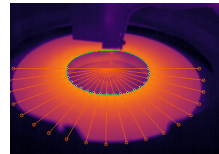


Selected Research Activities:

- Modelling and Control of Test Beds
 - speed profile tracking on vehicle test beds
 - temperature control for hot water boilers
 - intake/exhaust back pressure control for combustion engine test beds
- Process Control for Semiconductor Processing Equipment
 - estimation of surface temperature of silicon wafers
 - control of liquid film temperature on the wafer
 - fault detection for critical mechanical components
- Robust Sliding-Mode Controller and Observer Design
 - saturated actuators
 - discrete-time realization
 - stability and performance analysis
 - multivariable and distributed parameter systems



© Kristl, Seibt & Co GmbH / Lichtmeister



© Lam Research AG