

---

# Robot Vision: Features

Ass.Prof. Friedrich Fraundorfer

SS 2020

# Outline

---

- The importance of feature matching
- Image similarity and viewpoint changes
- Challenges
- Properties of detectors and descriptors
- Detectors
  - What locations would be good
  - Point detectors (concept of Harris and FAST)
  - Blob detectors (DOG)

# Image features

---

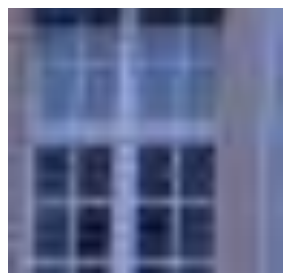
- The term “feature” or “image feature” is used with some variety of meaning.
- Set of properties, descriptions of image regions (in this case including a specific location) or the whole image
- Strictly speaking the term “feature” only means a description, but any description needs a location. So the wider definition also means a location and region
- “Feature points” are the detected point locations in images that are used for image matching or geometric algorithms.
- Image features are a combination of the results of a detector method and a descriptor method.

# The importance of feature matches

---

- Geometric algorithms need point correspondences i.e. image features
- The quality of feature matches determines the outcome of geometric algorithms.
  - Location accuracy of feature matches
  - Correctness of feature matches (mis-matches)
- Image classification, image indexing, image search, image interpretation also need feature points and feature matches.

# Image similarity and viewpoint changes



# Image similarity and viewpoint changes



# Two challenges

---

- How to select proper points (detectors)
- How to compute the similarity of image patches (descriptor)



# Properties of detectors

- Accurate localization
- Useful locations
- High repeatability detection



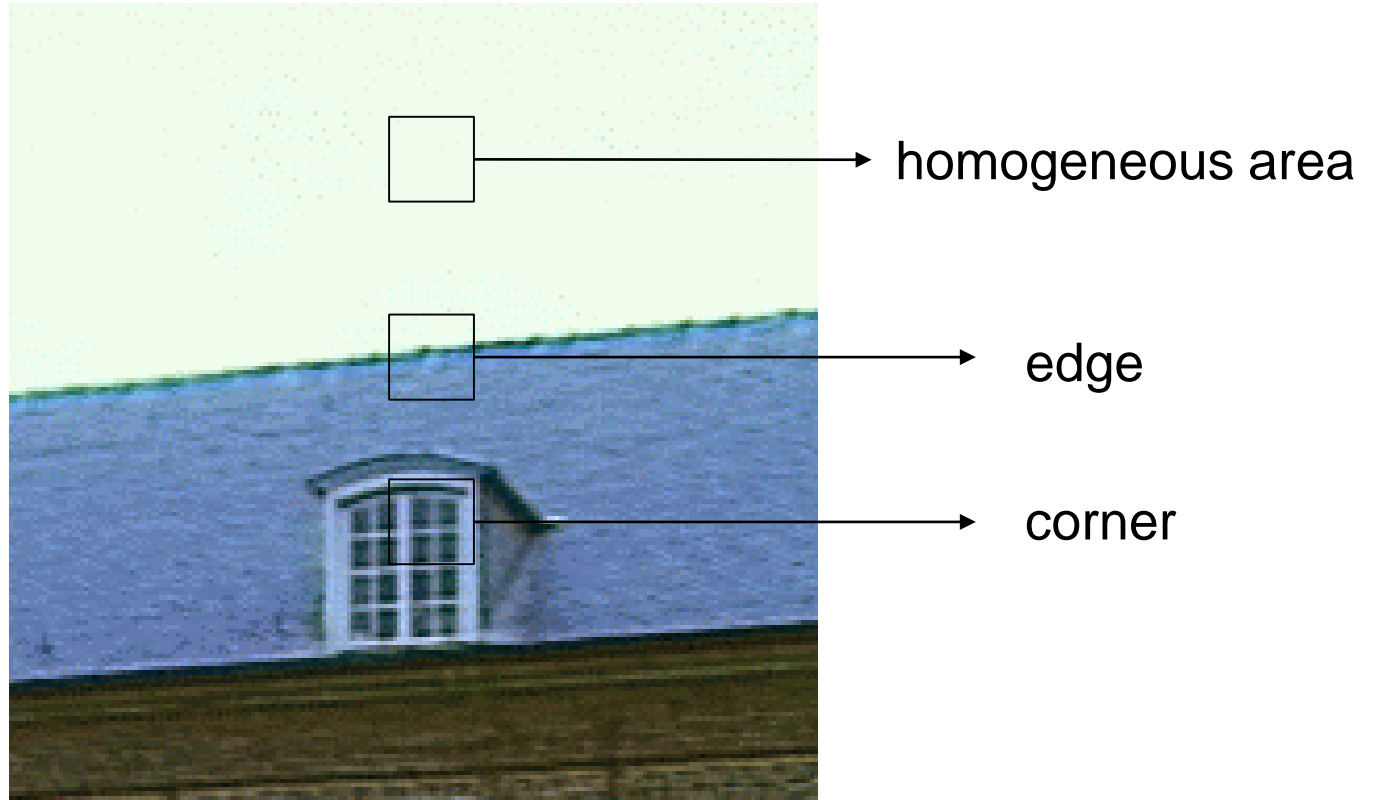


# Properties of descriptors

- Discriminative
- Descriptive
- Compact descriptions
- Invariance to image changes (brightness, rotation)



# Detectors: Which locations would be good



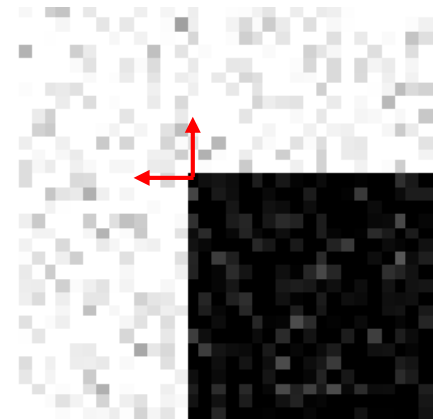
# Detectors

- Point detectors
  - Harris corners
  - FAST corners
- Blob detectors
  - DOG points



# Harris corners

- Looks for locations in an image where the SSD changes strongly

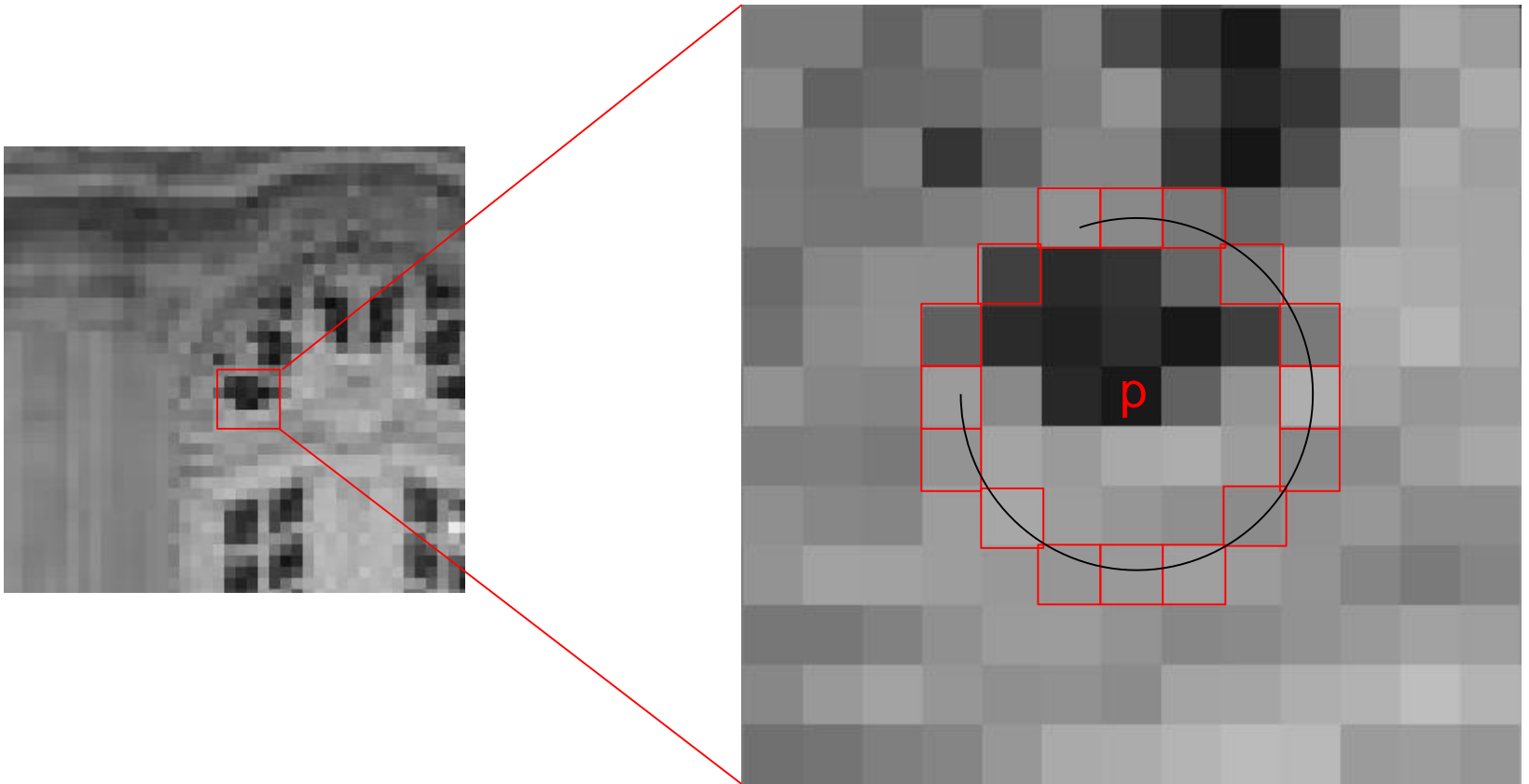


$$f(x, y) = \sum_{(x_k, y_k) \in W} (I(x_k, y_k) - I(x_k + \Delta x, y_k + \Delta y))^2$$

$$f(x, y) \approx (\Delta x \quad \Delta y) M \begin{pmatrix} \Delta x \\ \Delta y \end{pmatrix}$$

$$M = \sum_{(x,y) \in W} \begin{bmatrix} I_x^2 & I_x I_y \\ I_x I_y & I_y^2 \end{bmatrix} = \begin{bmatrix} \sum_{(x,y) \in W} I_x^2 & \sum_{(x,y) \in W} I_x I_y \\ \sum_{(x,y) \in W} I_x I_y & \sum_{(x,y) \in W} I_y^2 \end{bmatrix}$$

# FAST corners



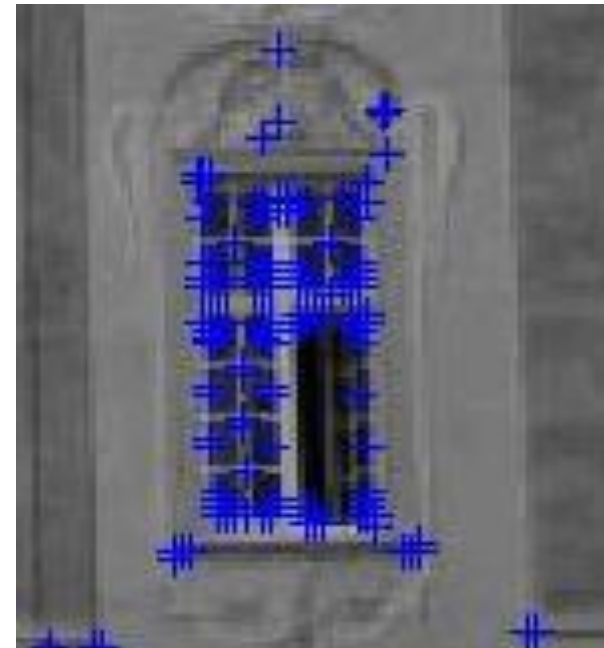
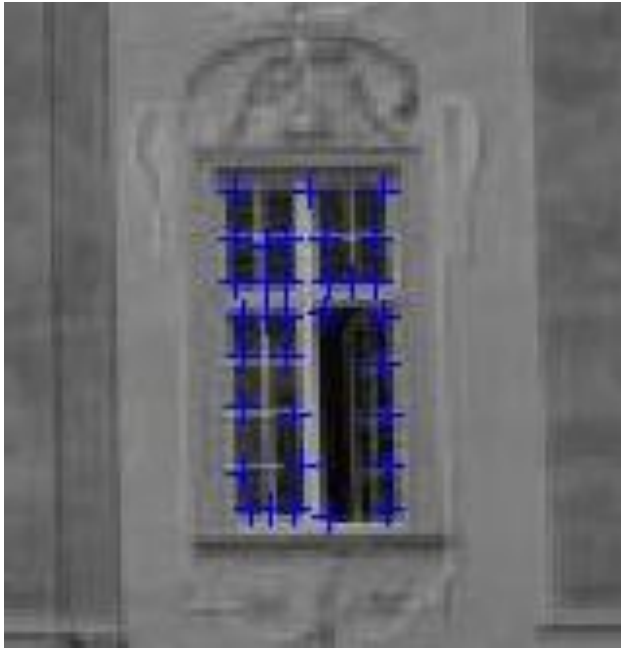
- Count the number  $N$  of contiguous pixels around a center pixel  $p$  that are brighter than the center pixel. If  $N \geq$  than some threshold this point is a feature location.



# Harris corners vs. Fast corners



# Harris corners vs. Fast corners



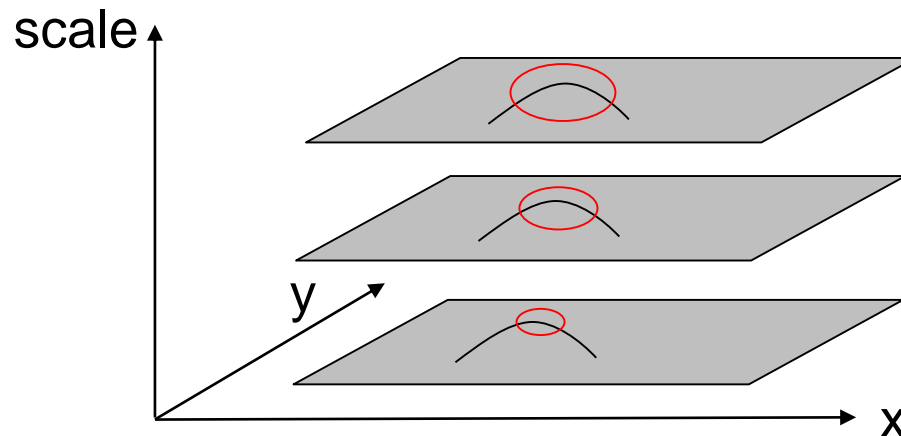
- Slower to compute
- Better control of number of detections with threshold

- Fast to compute
- Many detections
- Many corners next to each other



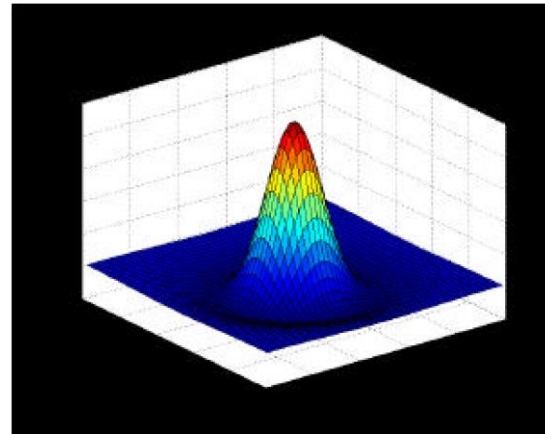
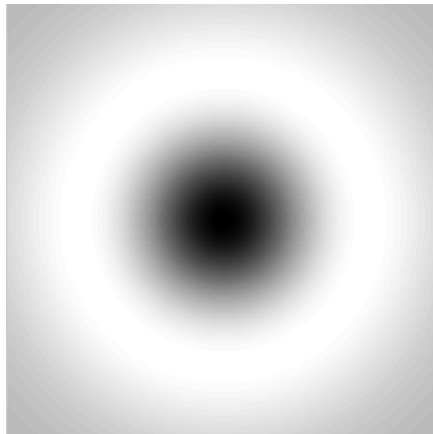
# Difference of Gaussian (DOG) points

- Is a Blob detector, detections are not necessarily on image corners
- Is a scale invariant detector, high repeatability even for images of different scales (image resolution)
- Processes images at different resolutions (scales) and then selects a feature location in  $x, y$  **and** a specific scale  $s$  which has a high value for the sum of the squares of the second derivatives in all directions (Laplacian)



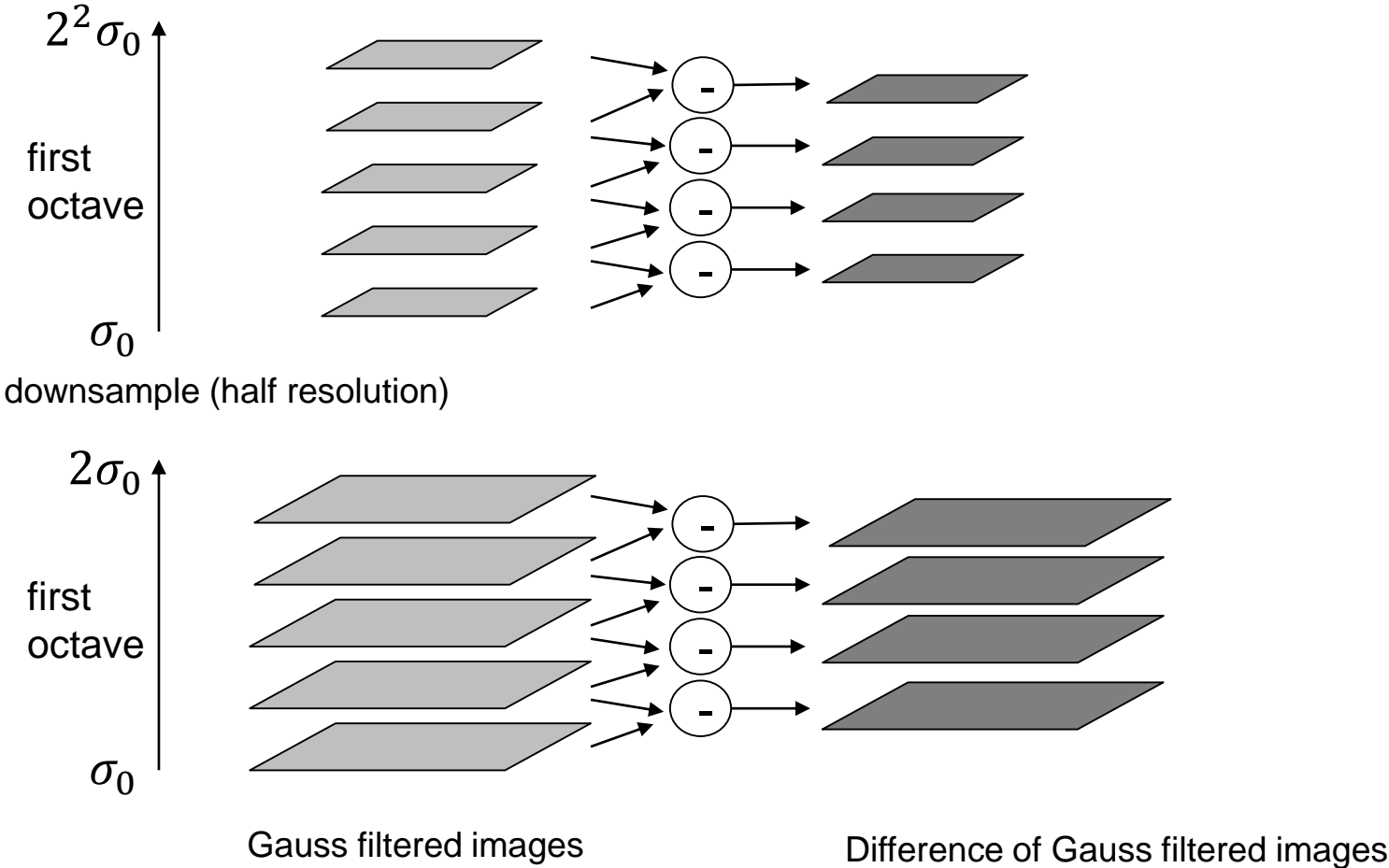
# DOG filter mask

- Filter mask is composed of the subtraction of two Gaussian filter masks
- Is an approximation of the Laplace operator (Laplacian of Gaussian, LOG) which is a blob detector



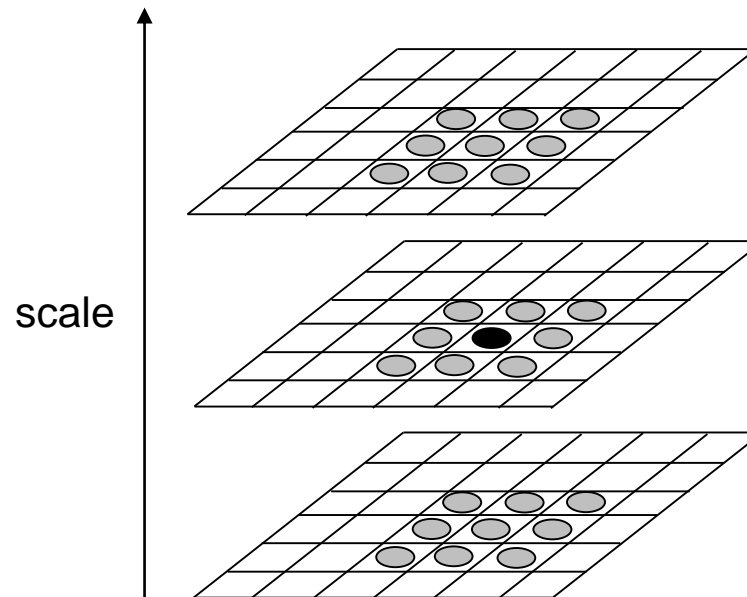
$$\text{DOG}(x, y) = \frac{1}{k} e^{-\frac{x^2+y^2}{(k\sigma)^2}} - e^{-\frac{x^2+y^2}{\sigma^2}}$$

# Computation of DOG's measure



# Selection of extrema

- Extrema are selected in 3D (x,y,scale)
- Center pixel needs to be larger or smaller than it's 26 neighbors



# DOG feature points

