

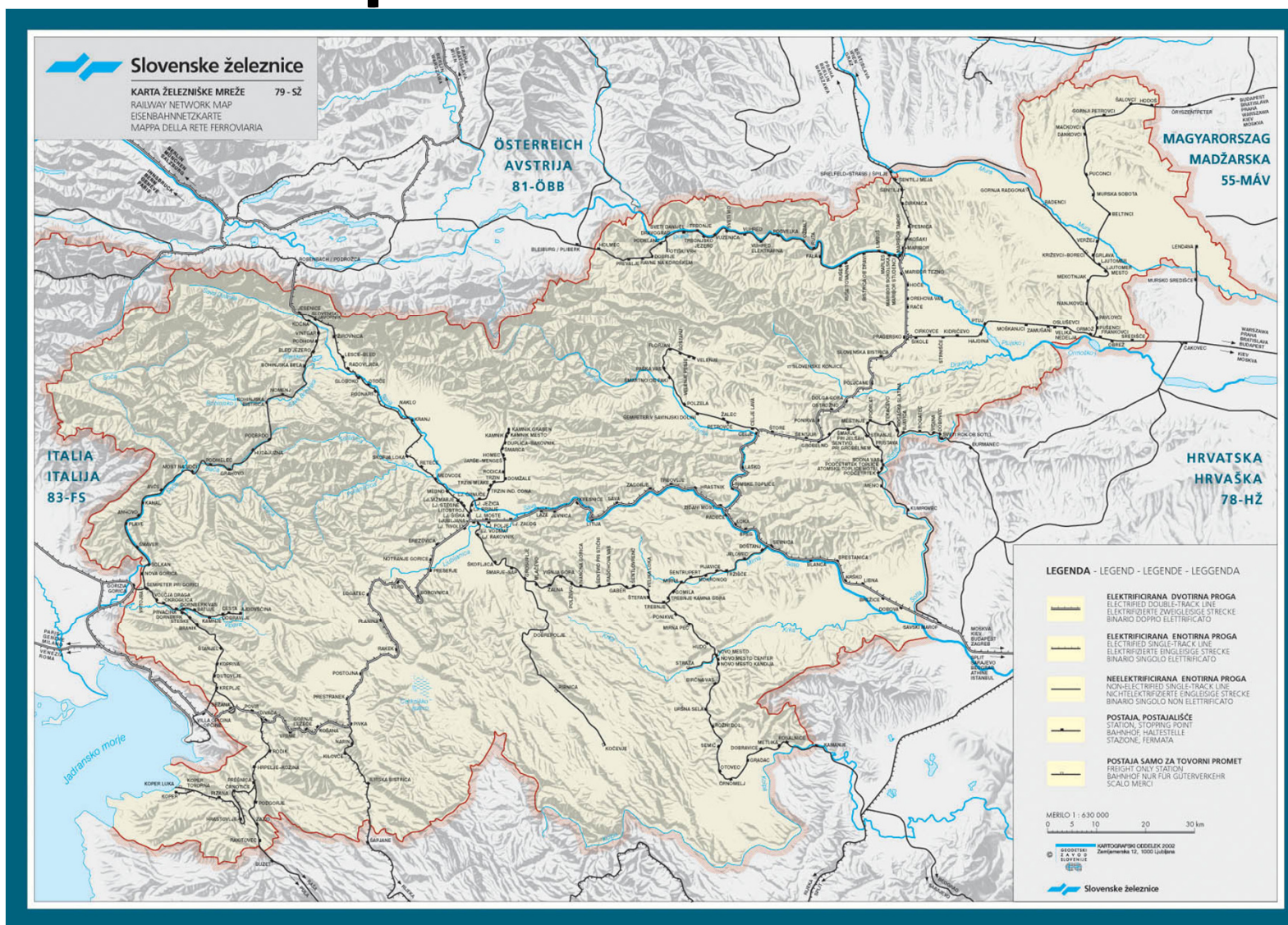
# **COST OF ENERGY TRANSPORT**

Jože PIHLER, Gorazd ŠTUMBERGER,  
Jurček VOH, Jože VORŠIČ

*University of Maribor,  
Faculty of Electrical Engineering and Computer Science,  
Power Engineering Laboratory*



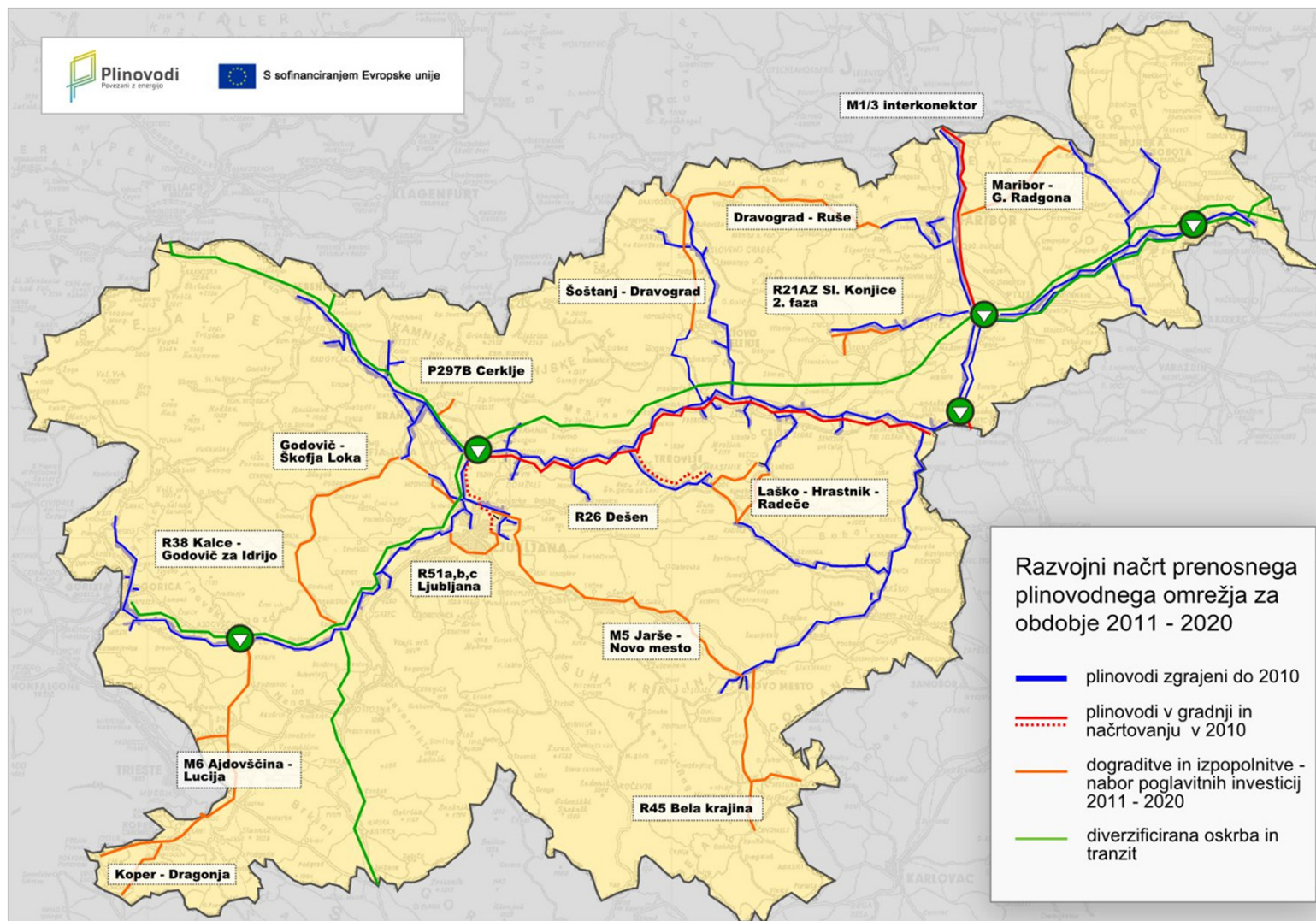
# Railway network in Republic of Slovenia



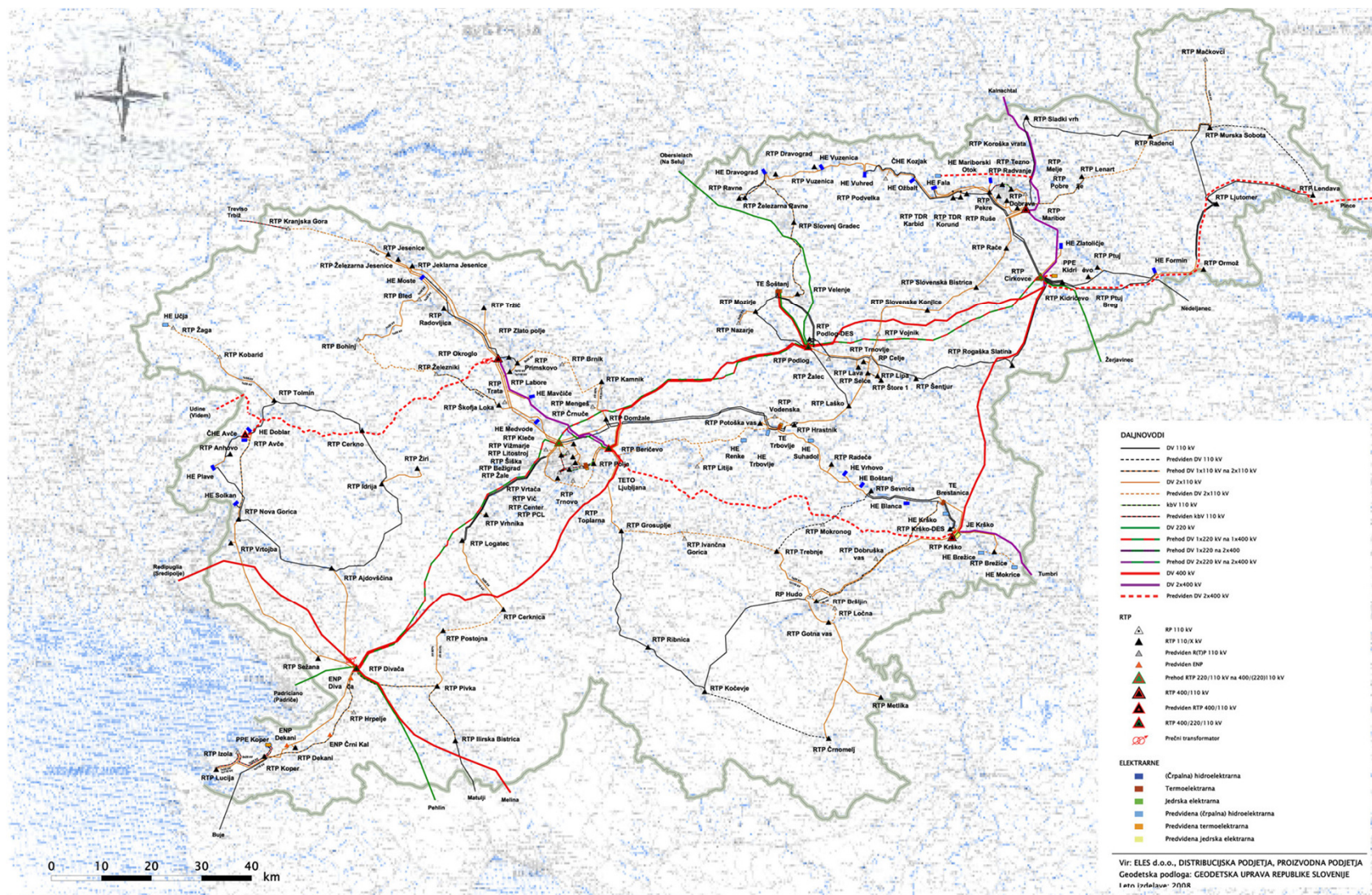
# Road network in Republic of Slovenia



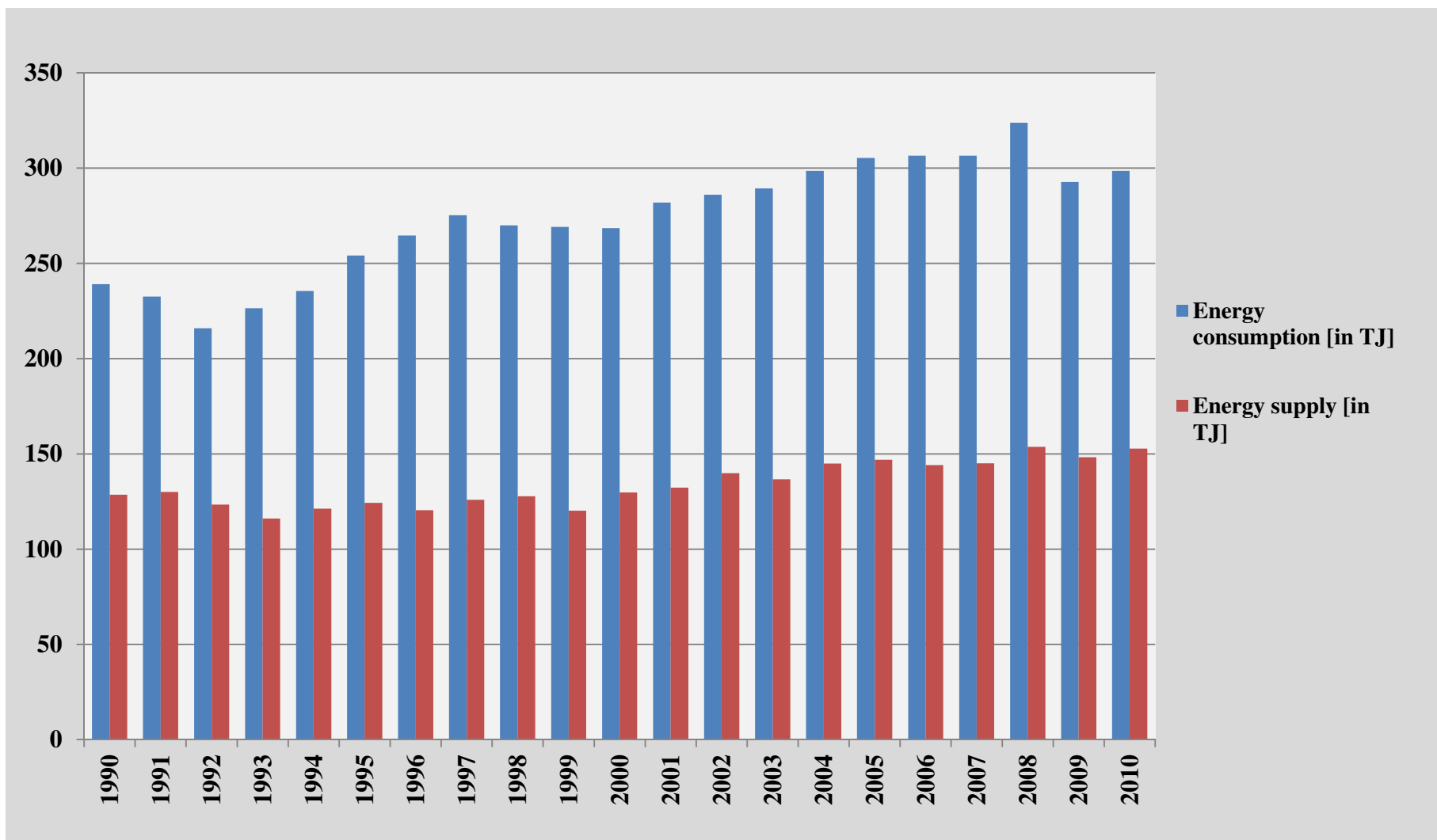
# Transmission gas pipeline network of natural gas in Republic of Slovenia



# Transmission electricity network in Republic of Slovenia

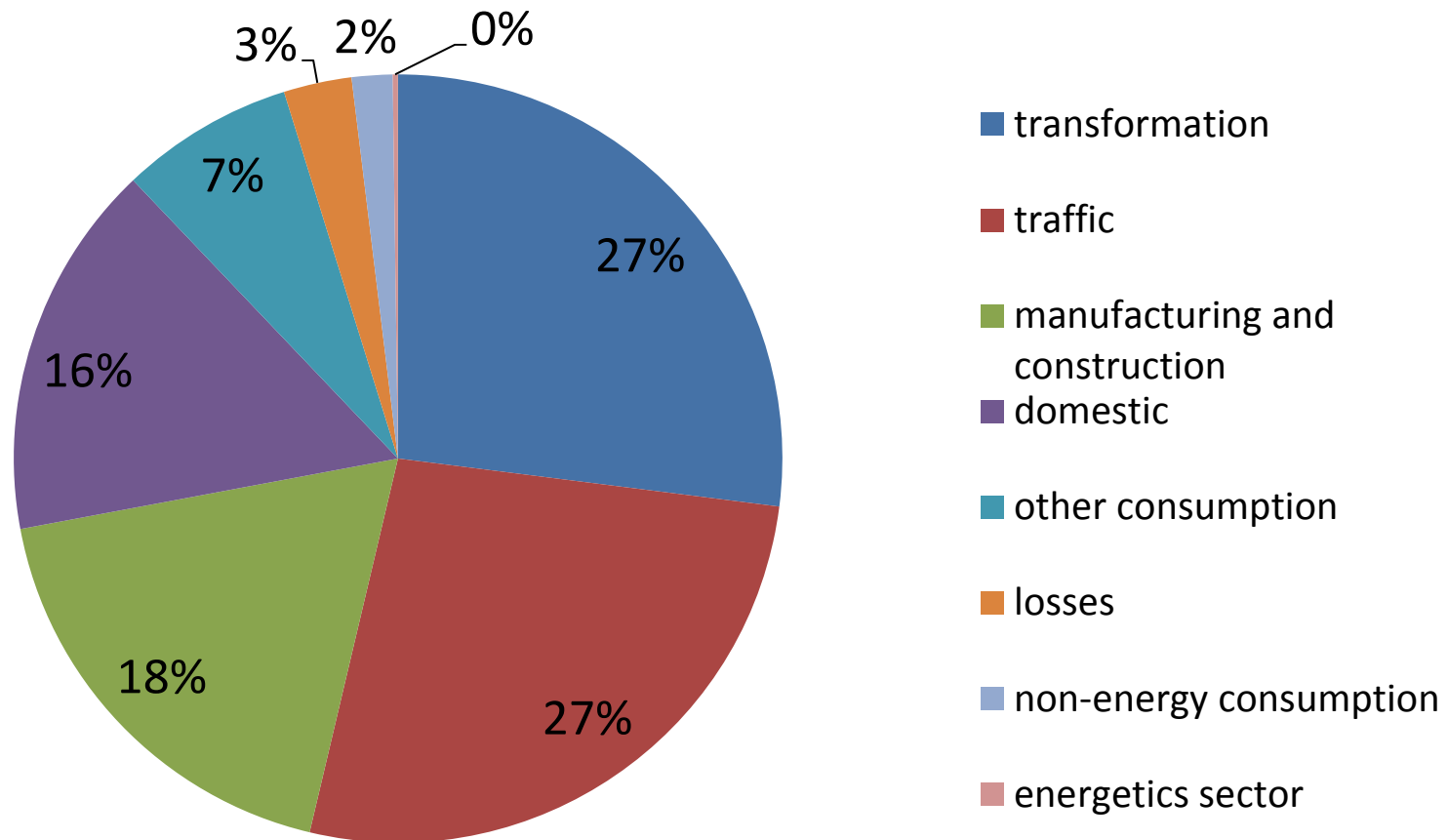


# Energy self-sufficiency in Republic of Slovenia



# Energy consumption in Republic of Slovenia by sectors

SUM = 291901 TJ (in 2010)





# Comparison of costs of energy product transport

c	Quantity	Transport mode	Energy price [EUR/MJ]	Transport price [EUR/MJ]	Transport cost and energy cost ratio	Transport cost and energy cost [EUR/MJ]
coal	100 t	railway	0,00250	0,00172	0,687	0,00422
coal	100 t	road	0,00250	0,00204	0,817	0,00455
ELKO	30 387 l	railway	0,01619	0,00041	0,026	0.01660
ELKO	30 387 l	road	0,01619	0,00045	0,028	0,01664
natural gas	32 281 Sm <sup>3</sup>	gas pipeline, transmission network	0,00734	0,00092	0,125	0,00826
natural gas	32 281 Sm <sup>3</sup>	gas pipeline, distribution network	0,00935	0,00315	0,337	0,01250
electricity	305,5 MWh	MV network	0,01502	0,00551 (t>2500 hrs)	0,367	0,02053
electricity	305,5 MWh	MV network	0,01502	0,00697 (t<2500 hrs)	0,464	0,02199
electricity	305,5 MWh	LV network	0,01502	0,01047 (t>2500 hrs)	0,697	0,02550
electricity	305,5 MWh	LV network	0,01502	0,01277 (t<2500 hrs)	0,850	0,02779



Thank you for your attention!

